

SENTINEL SERVER REPORTING – AVAILABLE REPORTS



Author : Andrew Bone

2/3/2017

V1.0

Details on the available reports within the
RMS Reporting Database

Details on the available reports within the RMS Reporting Database used for analysis will be documented here. This will cover the usage log file analysis.

Table of Contents

1. INTRODUCTION	3
2. SENTINEL SERVER USAGE MONITORING	3
2.1 Usage Log Creation.....	3
2.1.1 Environment Variable	3
2.1.2 Service Start Parameter	3
3. REPORTING DATABASE	4
3.1 Database Installation	5
3.2 Usagelog file import	6
4 USAGE LOG FILE ANALYSIS	8
4.1 Date Range	8
4.2 Available Reports	9
4.2.1 Total Tokens Granted Per Feature	9
4.2.2 Maximum Tokens Granted Per Feature	10
4.2.3 Total Minutes Used Per Feature	11
4.2.4 Average Tokens Granted Per Feature.....	12
4.2.5 Total No. Of Tokens Denied Per Feature	14
4.2.6 %age Tokens Denied Per Feature	15
4.2.7 Total Tokens Granted Per Feature Per Host	16
4.2.8 Maximum Tokens Granted Per Feature Per Host.....	17
4.2.9 Total Minutes Used Per Feature Per Host	18
4.2.10 AverageTokens Granted Per Feature Per Host.....	19
4.2.11 Total Tokens Denied Per Feature Per Host.....	21
4.2.12 %age Tokens Denied Per Feature Per Host.....	21
4.2.13 Total Tokens Granted Per Feature Per User.....	22
4.2.14 Maximum Tokens Granted Per Feature Per User.....	23
4.2.15 Total Minutes Used Per Feature Per User	24
4.2.16 Average Tokens Granted Per Feature Per User	25
4.2.17 Total Tokens Denied Per Feature Per User.....	27
4.2.18 %age Tokens Denied Per Feature Per User.....	27
4.2.19 Total Tokens Granted Per Feature Per Period	28

1. INTRODUCTION

Network licenses for our products are hosted on a Sentinel Server supplied by Safenet. Although these licenses can be installed on a Sentinel server version 8.1 or newer, we supply the version 8.4 installation files via our FTP site. When installed, the Wechoid details are supplied to us and the appropriate license files are issued with installation instructions. When installed, these then allow our applications to be run on workstations connected to the network.

Licence usage logs can be generated that can then be imported into the Sentinel RMS reporting database for further analysis. This document aims to detail the available reports from within the Sentinel RMS reporting database and demonstrate the available network licence monitoring available.

2. SENTINEL SERVER USAGE MONITORING

The following sections detail the configuration and available Sentinel server monitoring tools. Although the WLMADMIN application can be used to view current network licence allocations, Safenet have provided further monitoring tools that can be configured to provide historic licence usage. This allows analysis of licence usage between specific dates or all available dates. The following sections provide details on the configuration of the Usage log files, import of these into the reporting database and the reports available.

2.1 Usage Log Creation

The usage log is a comma Separated file (.csv) that lists all network license allocations. This can be configured in the following methods:

- Environment Variable to record all details from the Sentinel server
- Service Start parameter to record all details since the Sentinel RMS Service Manager was started.

The following sections document each configuration method.

2.1.1 Environment Variable

This ensures the usage logs are logged constantly from the time the ‘Sentinel RMS’ service is started.

Set the following Environment Variable on the system:

LSERVOPTS

Use the following Variable Value:

-l f:\test\USAGELOG.CSV

-l Specifies the name and location of the license server’s usage log file, which enables usage logging. By default, usage logging is disabled.

2.1.2 Service Start Parameter

The following parameters can be placed in the Sentinel RMS Licence Manager Service

On a supported Windows system, use the following steps:

- From the Start menu, point to Settings > Control Panel.
- Double-click Administrative Tools.

- Double-click Services.
- In the Services window, locate Sentinel RMS Development Kit License Manager and double-click it.

Stop the license server (service, if running already).

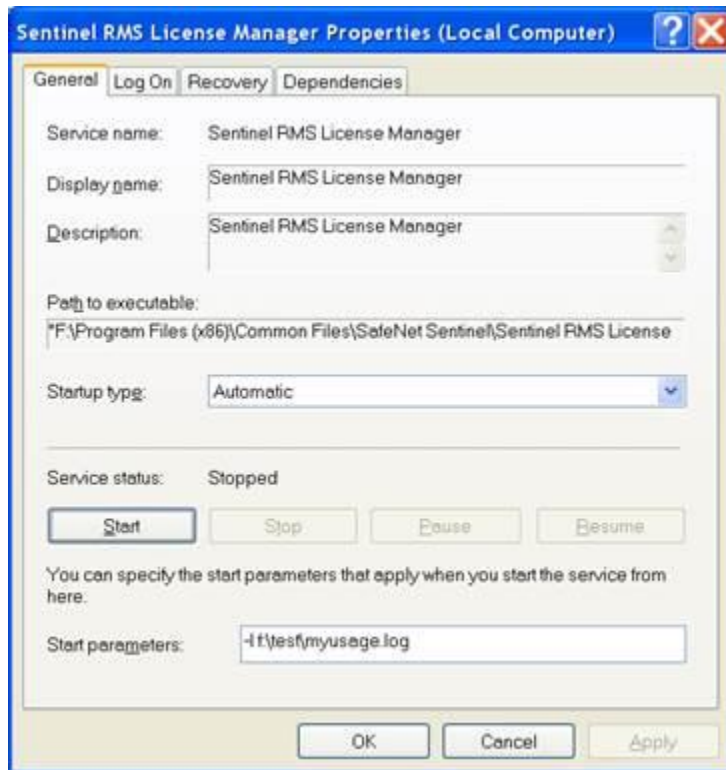
Enter the following:

```
-l <path>\<licenceusage.log>
```

Where:

<path> refers to folder path to save the Usage log file to

<licenceusage.log> refers to the Usage file name:



Click on Apply then Start the license server after providing the settings by clicking on the START button in the Service dialog box above. This will apply the 'Start Parameters' to this instance of the Service. Note restarting this service will require the 'Start Parameters' to be entered again.

3. REPORTING DATABASE

The RMS Reporting Utility as supplied by Safenet, consists of one table and a number of SQL queries that are run each time a report is requested. The reports listed have been provided by Safenet. However the database design has been enhanced slightly by Sciencsoft to improve the ease of importing the usage log file. If further reports are required, these can be generated using SQL as required.

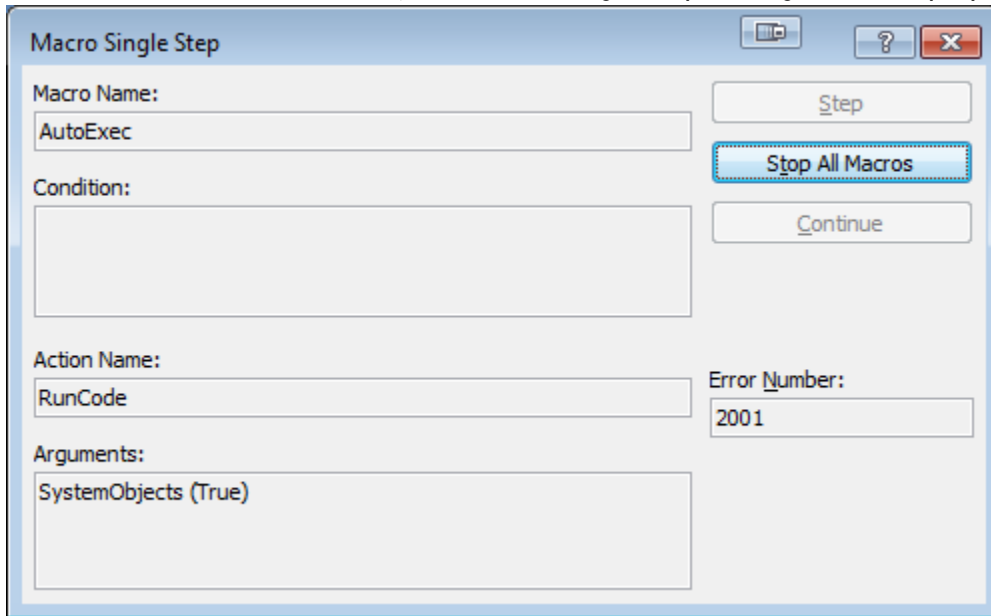
When provided by Sciencsoft, this database contains no data.

3.1 Database Installation

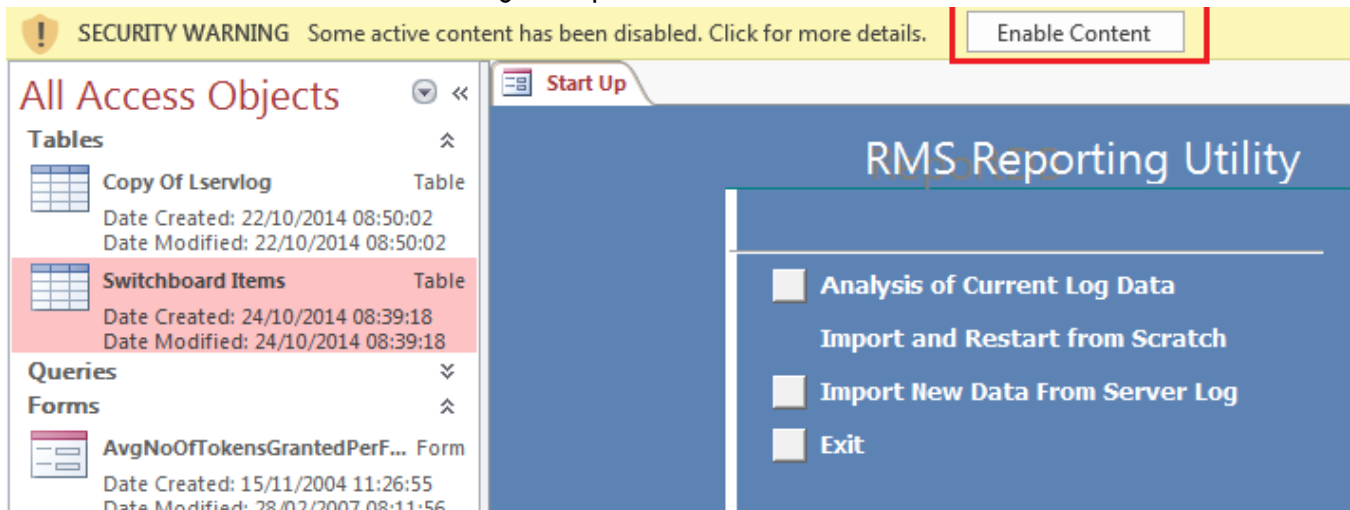
The reporting database is a Microsoft Access database. As such at least Microsoft Access version 97 must be installed on the workstation to open this. In addition the **lsusage** executable must be in the same folder to allow the usagelog conversion to be completed.

The following steps must be completed to install this application:

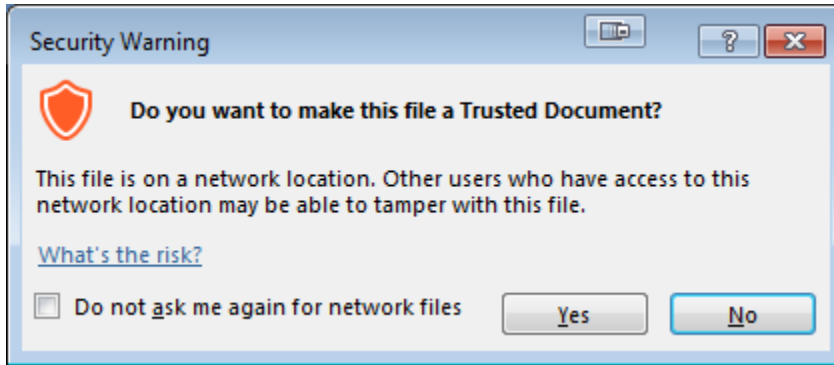
1. Download the lsusage-v2.2.zip file from our FTP site
2. Extract the contents of the ZIP file to a workstation that has Microsoft Access installed. Note this does not have to be the same workstation that is running the Sentinel Server software.
3. Double click on the 'ReportDB-Analysisv2.2.mdb' to launch Microsoft Access and open this database. When launched for the first time, the 'Macros Single Step' dialog will be displayed:



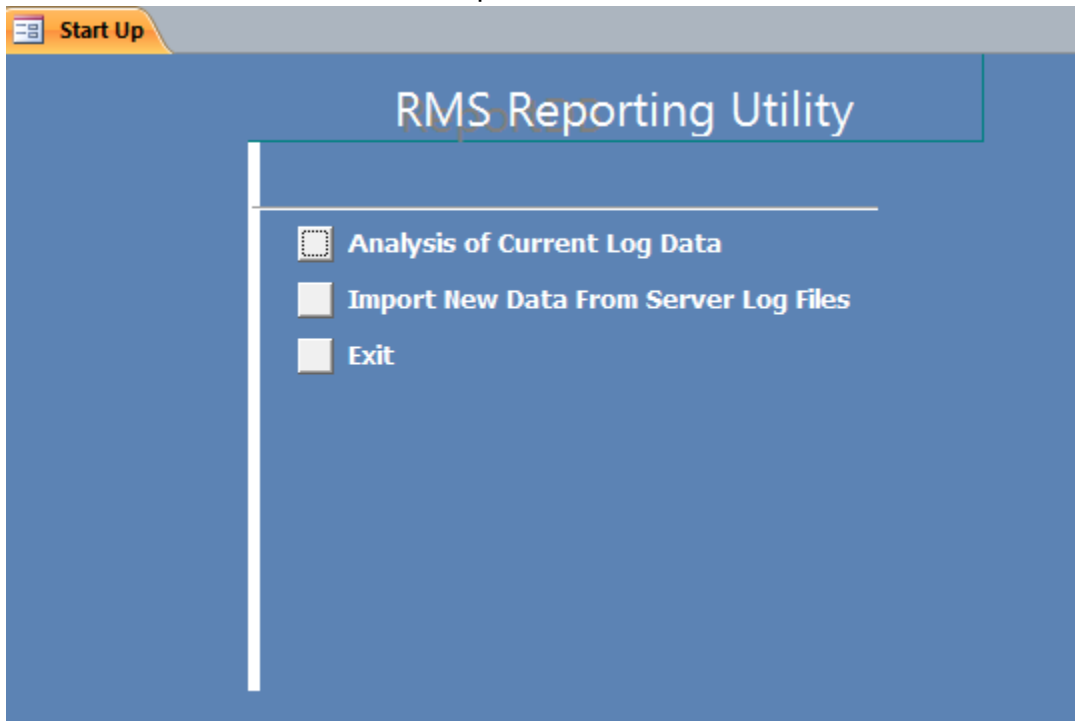
4. Click on the 'Stop All Macros' on the dialog to close this.
5. Click on the 'Enable Content' button along the top:



This will display the 'Security Warning':



6. Select the 'Yes' button to close this.
7. The database must be closed and re-opened to enable this content:

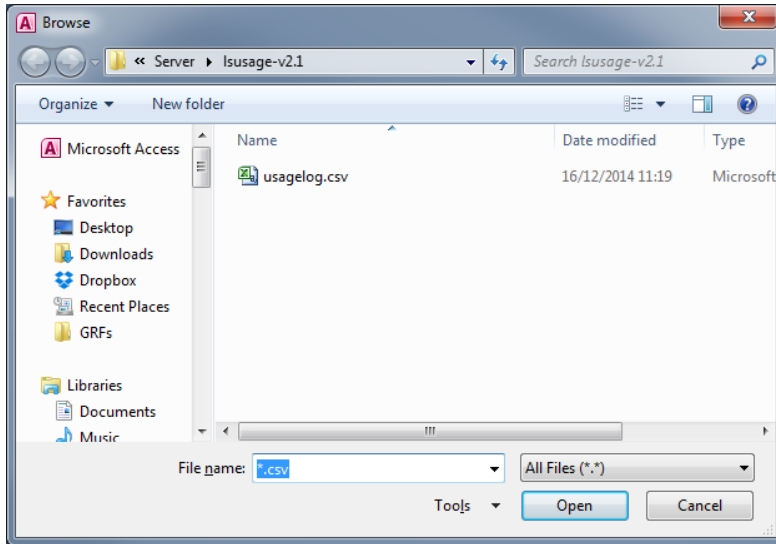


The Database security has now been set and the data can be imported.

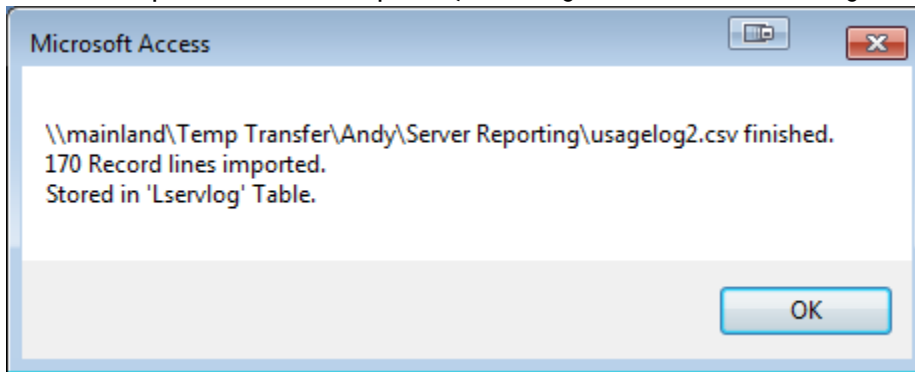
3.2 Usagelog file import

Before the Usagelog files can be analysed, they must first be imported into the RMS Reporting Utility. To complete this, please follow these steps:

1. Copy the usagelog.csv file from the Sentinel server location as detailed in **section 3.1** above, to the same folder as the Reporting database. (Although this is not a required step, it makes finding this file easier.)
2. Click on the 'Import New Data From Server Log Files' link on the reporting database main Switchboard, to display the 'Browse' dialog:



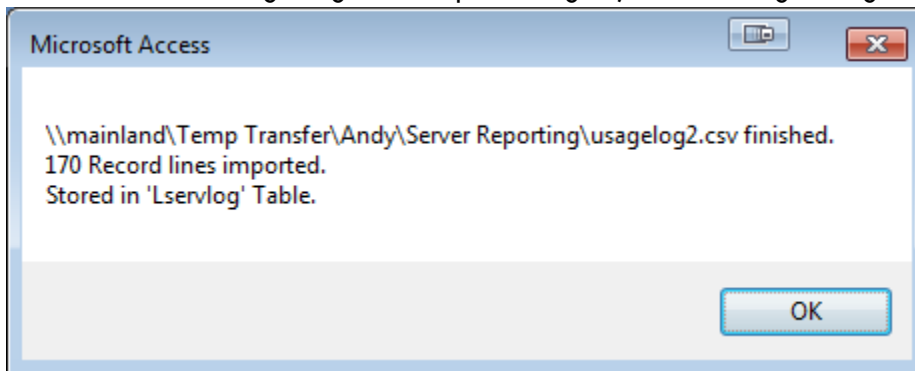
3. Navigate to the correct folder, highlight the file and click on 'Open'
Note nothing will appear to happen for a few minutes however the database may become unresponsive.
4. Once the import has been completed, a dialog similar to the following will be displayed:



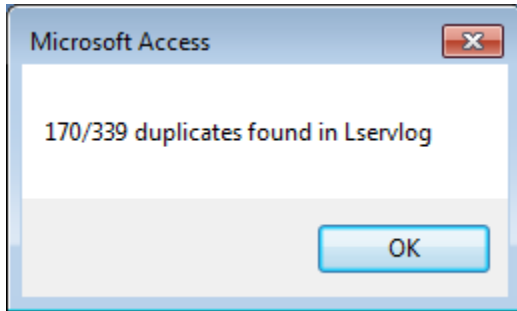
5. Click on OK to close this.

The usage log csv file has now been imported into the Reporting database.

Note if the same Usage Log file is imported again, the following dialog will be displayed:



Followed by:



In this case, the additional duplicate entries are removed from the database when OK is pressed.

4 USAGE LOG FILE ANALYSIS

The usage log file contents have now been imported into the Sentinel RMS Reporting Utility. To display the default reporting options, click on the 'Analysis of Current Log Data' button from the main reporting database homepage. This will display the following form:

Sentinel RMS Developer Kit 8.1.0.0 Reporting Utility Copyright ©2006 SafeNet, Inc.

Available Date Range

Start Date [mm/dd/yy]
End Date [mm/dd/yyyy]

Note :- Log Records for the above specified Date Range exists in the Log Table.

Specify Date Range

Start Date [mm/dd/yy]
End Date [mm/dd/yyyy]

Note :- If Date Range is not specified (left blank) then the Report for the entire date range would be

Click To View The Corresponding Report :


Total Tokens Granted Per Feature	AverageTokens Granted Per Feature Per Host
Maximum Tokens Granted Per Feature	Total Tokens Denied Per Feature Per Host
Total Minutes Used Per Feature	%age Tokens Denied Per Feature Per Host
AverageTokens Granted Per Feature	Total Tokens Granted Per Feature Per User
Total No. Of Tokens Denied Per Feature	Maximum Tokens Granted Per Feature Per User
%age Tokens Denied Per Feature	Total Minutes Used Per Feature Per User
Total Tokens Granted Per Feature Per Host	AverageTokens Granted Per Feature Per User
Maximum Tokens Granted Per Feature Per Host	Total Tokens Denied Per Feature Per User
Total Minutes Used Per Feature Per Host	%ageTokens Denied Per Feature Per User
Total Tokens Granted Per Feature Per Period	
<input type="button" value="Close"/>	

The following sections detail the available options here.

4.1 Date Range

When opened, the 'Available Date Range' is automatically populated with the date range available from the usage log data imported.

The 'Specify Date Range' will be blank when first opened but can be populated with dates to analyse a subset of the available data:

Available Date Range	Specify Date Range
Start Date [mm/dd/yyyy] <input type="text" value="21/10/2014"/>	Start Date [mm/dd/yyyy] <input type="text" value="01/12/2014"/>
End Date [mm/dd/yyyy] <input type="text" value="16/12/2014"/>	End Date [mm/dd/yyyy] <input type="text" value="08/12/2014"/> 
Note :- Log Records for the above specified Date Range exists in the Log Table.	Note :- If Date Range is not specified (left blank) then the Report for the entire date range would be

In this case the start date and end dates have been specified as the 1st week in December.

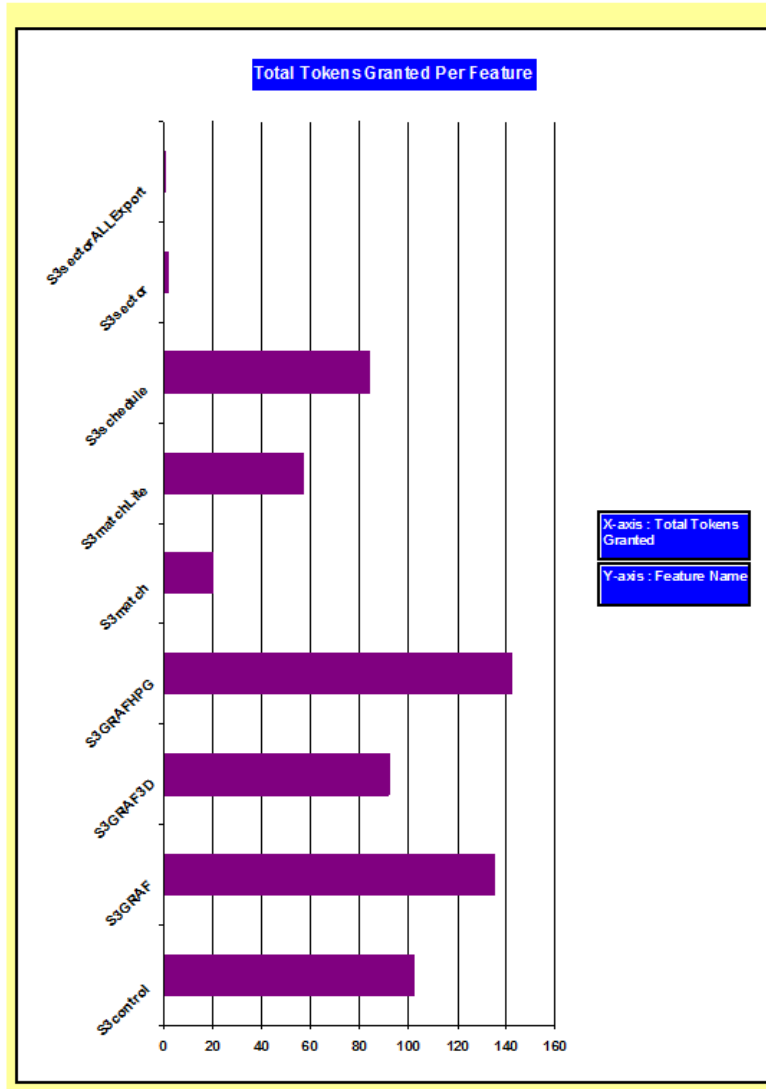
4.2 Available Reports

The following reports are available. These are restricted based on the Available or Specific date selections made on this form.

4.2.1 Total Tokens Granted Per Feature

This is available when the following button is selected on the form:

When selected, the following report is displayed:



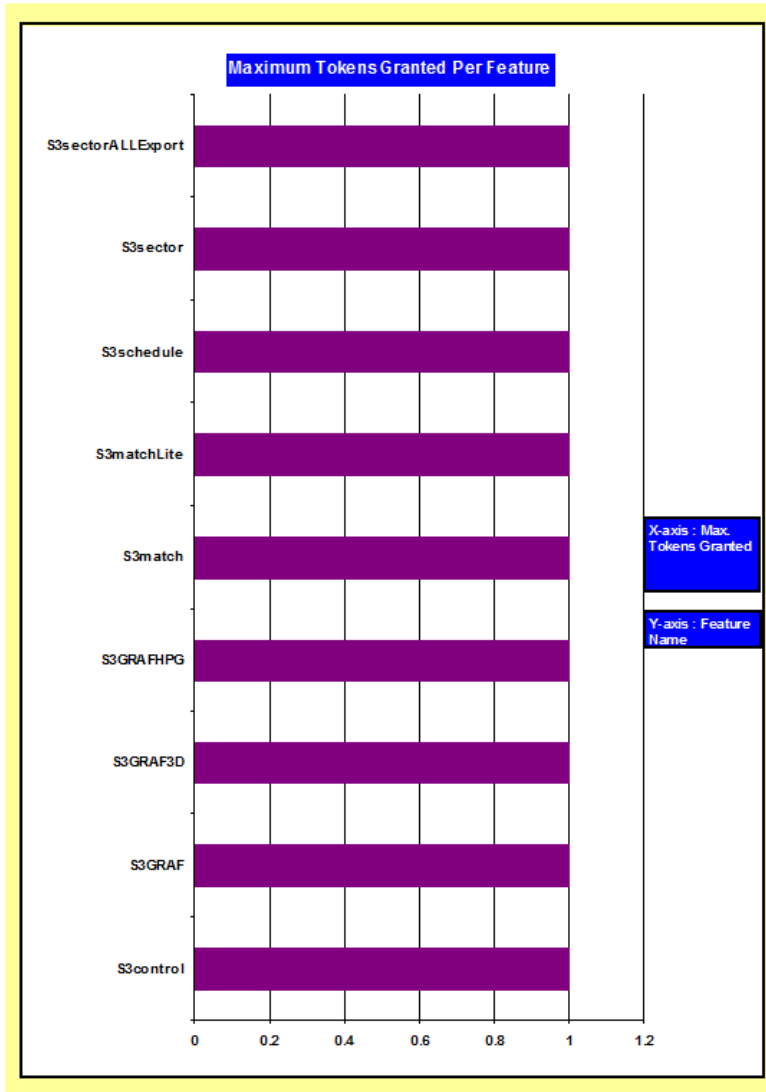
This lists the total number of each licence issued during the Specified Date Range.

4.2.2 Maximum Tokens Granted Per Feature

This is available when the following button is selected on the form:

Maximum Tokens Granted Per Feature

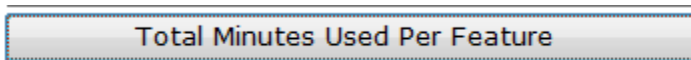
When selected, the following report is displayed:



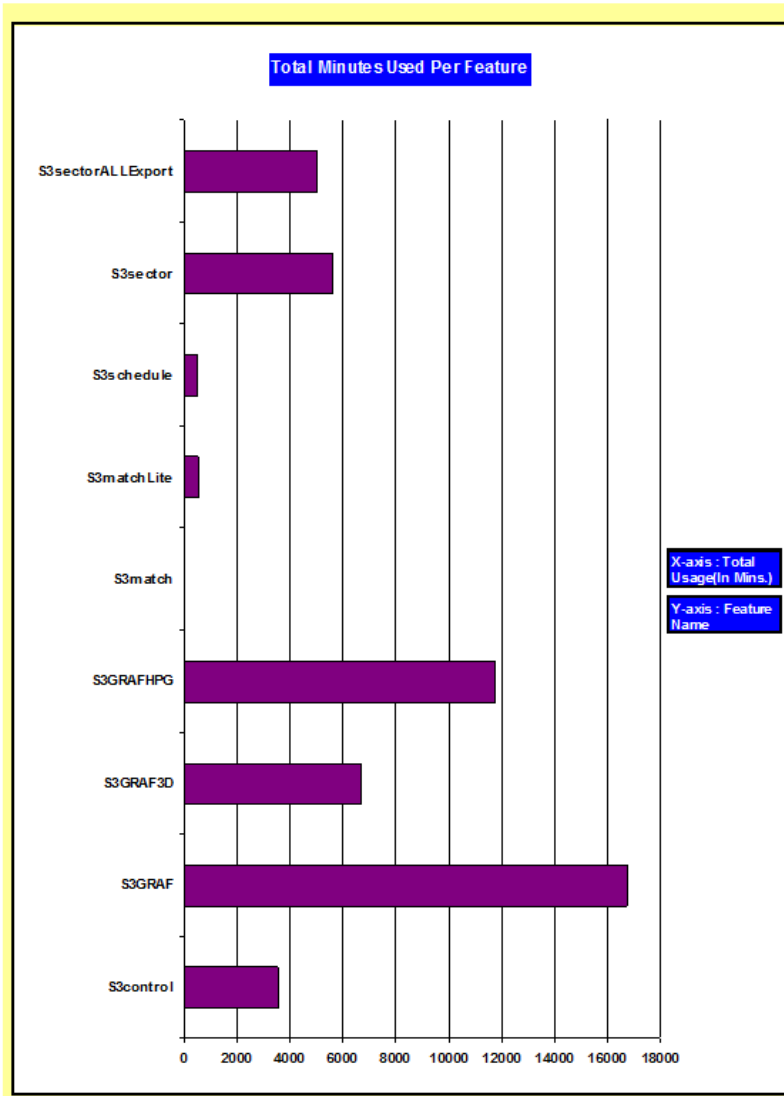
This report lists the maximum tokens granted per feature to use the feature.

4.2.3 Total Minutes Used Per Feature

This is available when the following button is selected on the form:



When selected, the following report is displayed:



This lists the total number of minutes the licence components have been used in the time range specified.

4.2.4 Average Tokens Granted Per Feature

This is available when the following button is selected on the form:

AverageTokens Granted Per Feature

When selected, the following report is displayed:

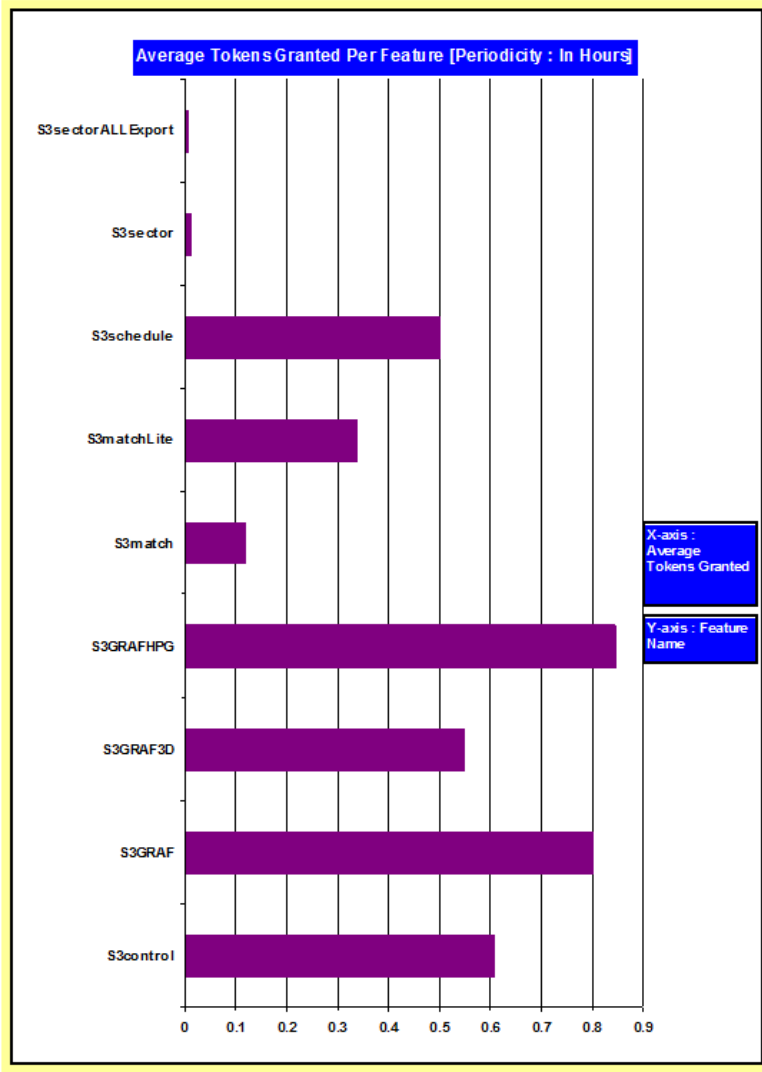
Average No. Of Tokens Granted Per Feature

Enter Periodicity :

View Report, When Periodicity Entered is in :

Report Algo : [Average Tokens Granted Per Feature < Periodicity >](#)
[Per < Mins | Hours | Days | Weeks >](#)

In this case, the periodicity should be selected. For example selecting Hours results in:



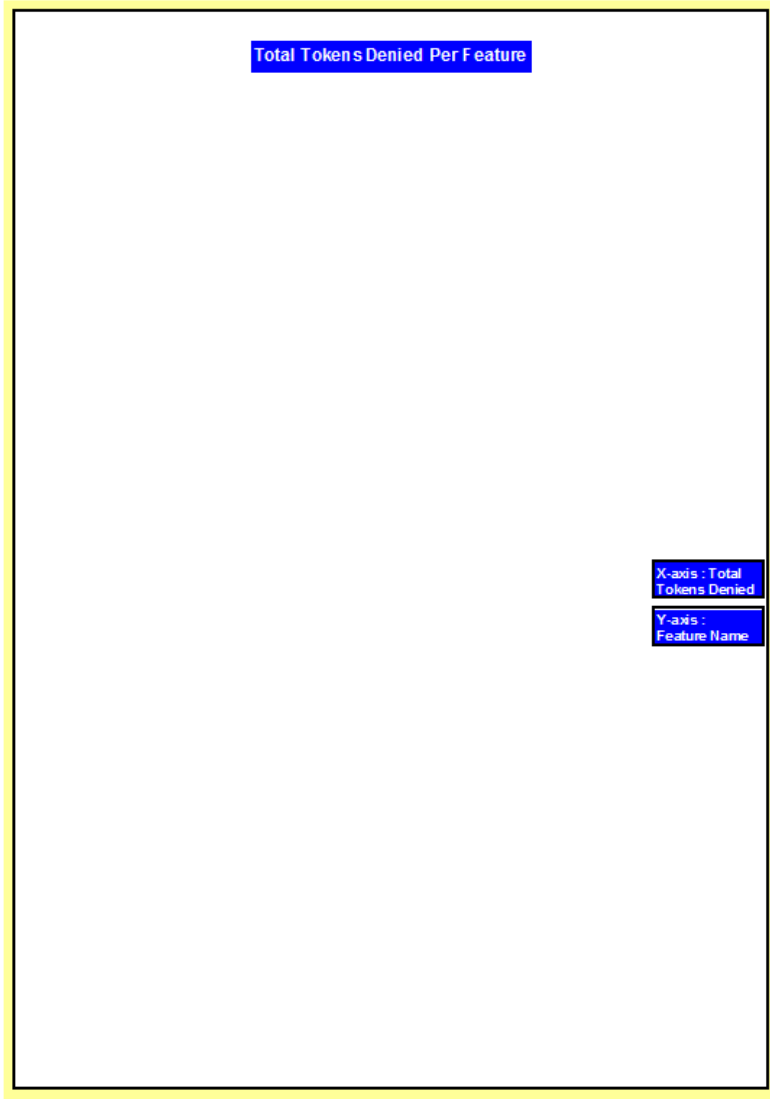
This lists the average tokens issued per hour during the specified time range

4.2.5 Total No. Of Tokens Denied Per Feature

This is available when the following button is selected on the form:



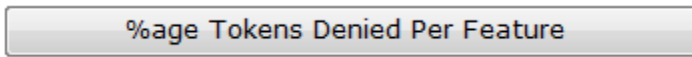
When selected, the following report is displayed:



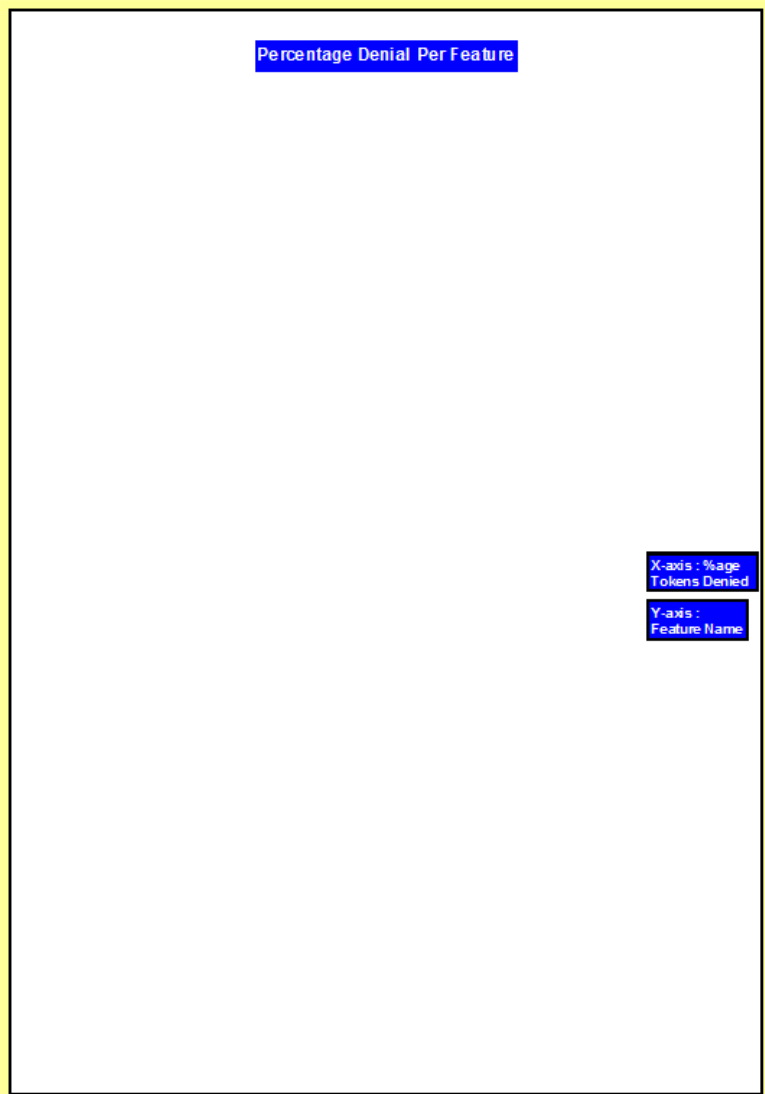
This lists the total number of license requests denied during the specified date range.

4.2.6 %age Tokens Denied Per Feature

This is available when the following button is selected on the form:



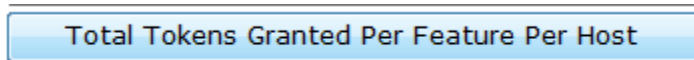
When selected, the following report is displayed:



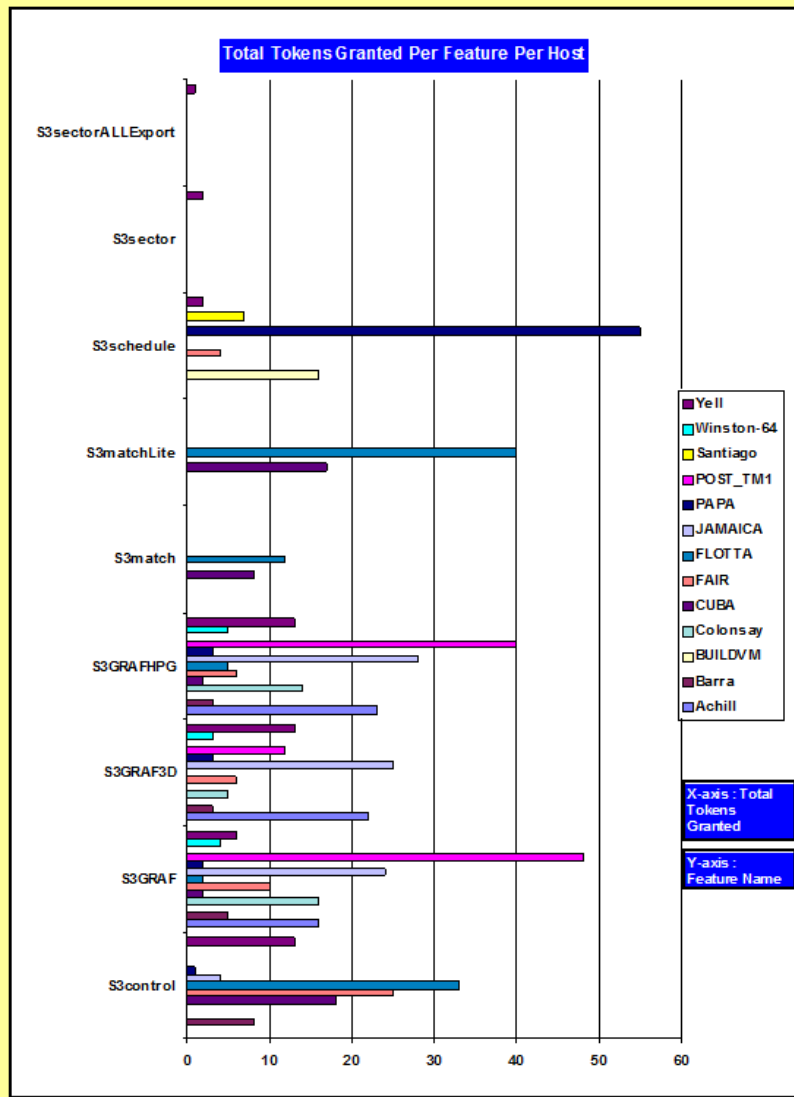
This lists the total percentage of licence requests that were denied during the specified date range

4.2.7 Total Tokens Granted Per Feature Per Host

This is available when the following button is selected on the form:



When selected, the following report is displayed:



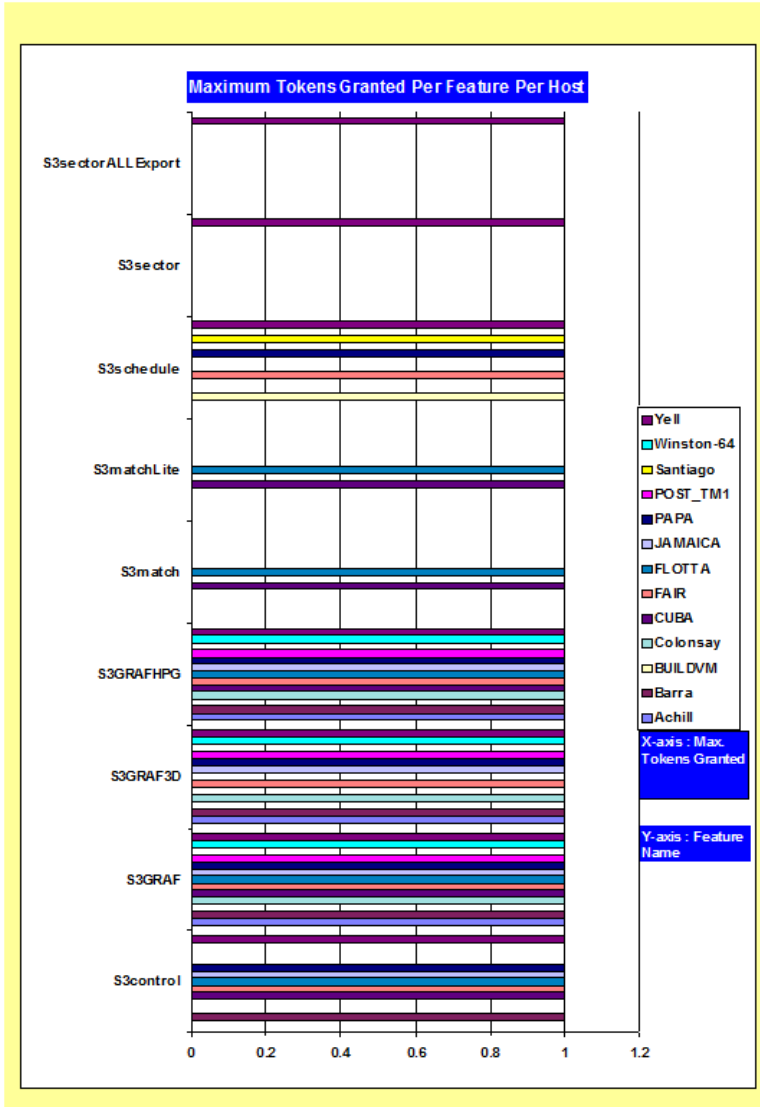
This lists the total number of licences assigned to various hosts during the specified date range

4.2.8 Maximum Tokens Granted Per Feature Per Host

This is available when the following button is selected on the form:



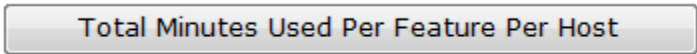
When selected, the following report is displayed:



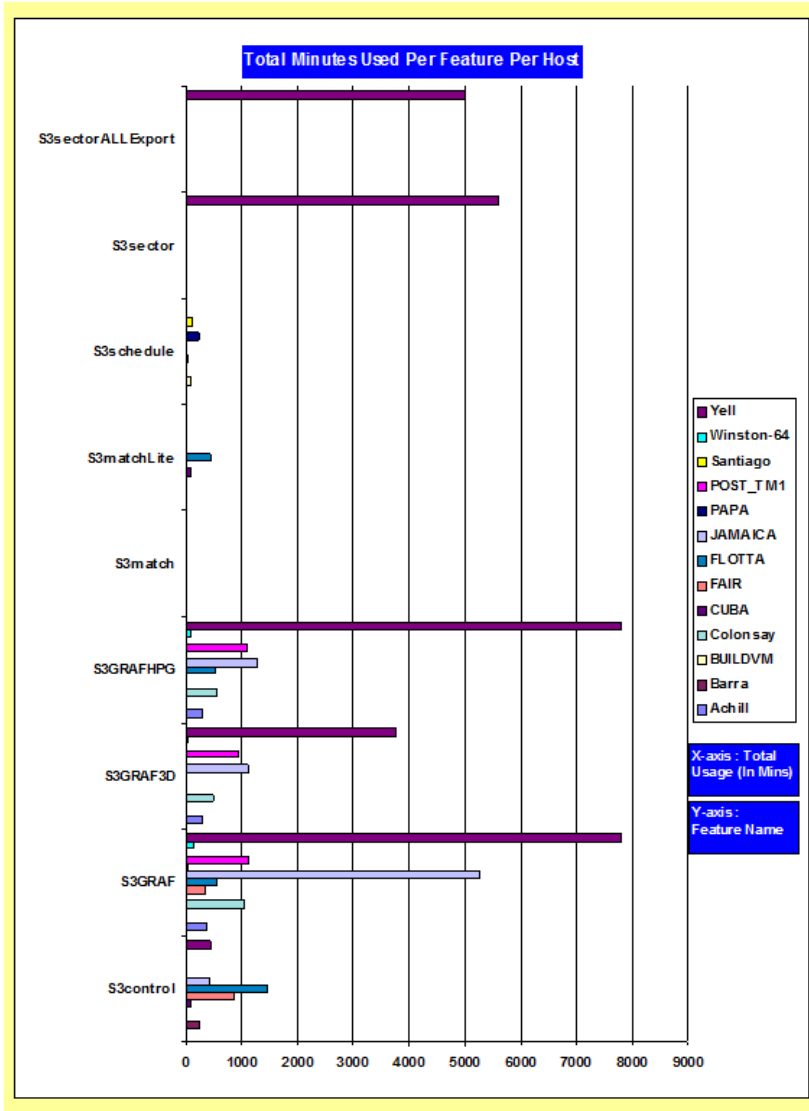
This lists the maximum number of licences assigned to various hosts during the specified date range

4.2.9 Total Minutes Used Per Feature Per Host

This is available when the following button is selected on the form:



When selected, the following report is displayed:



This lists the total time the various hosts used a feature.

4.2.10 AverageTokens Granted Per Feature Per Host

This is available when the following button is selected on the form:

AverageTokens Granted Per Feature Per Host

When selected, the following report is displayed:

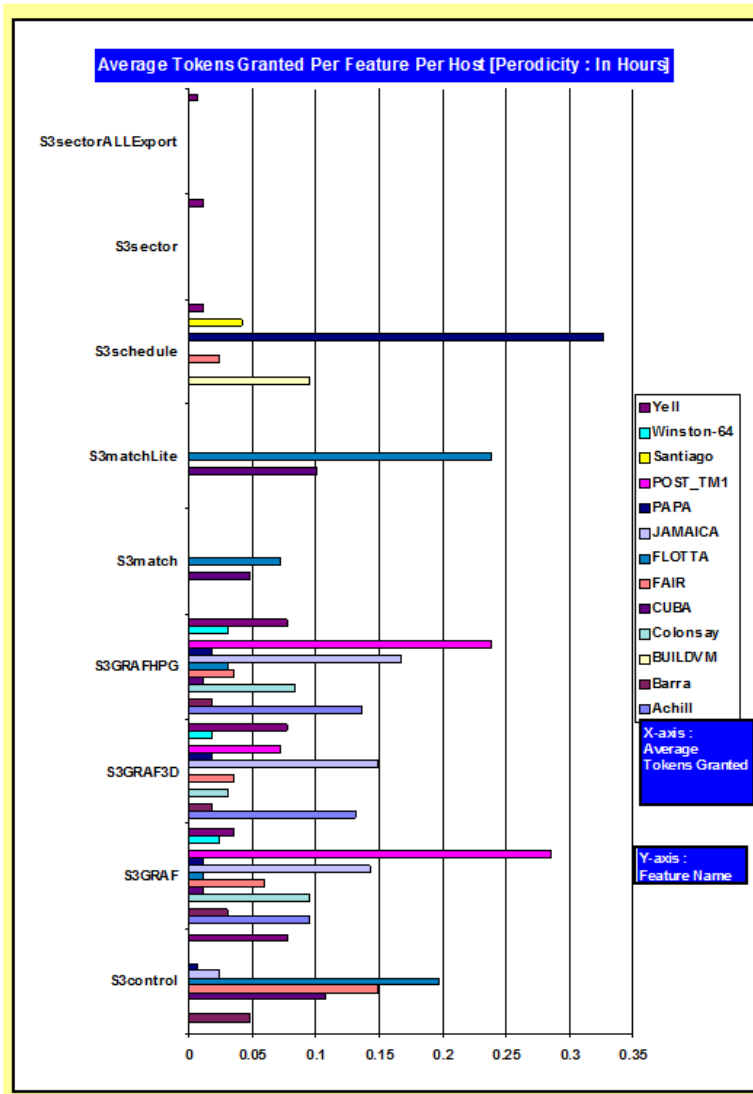
Average No. Of Tokens Granted Per Feature Per Host

Enter Periodicity :

View Report, When Periodicity Entered is in :

Report Algo : Average Tokens Granted Per Feature Per Host < Periodicity >
 Per < Mins | Hours | Days | Weeks >

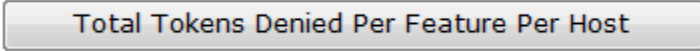
In this case, the periodicity should be selected. For example selecting Hours results in:



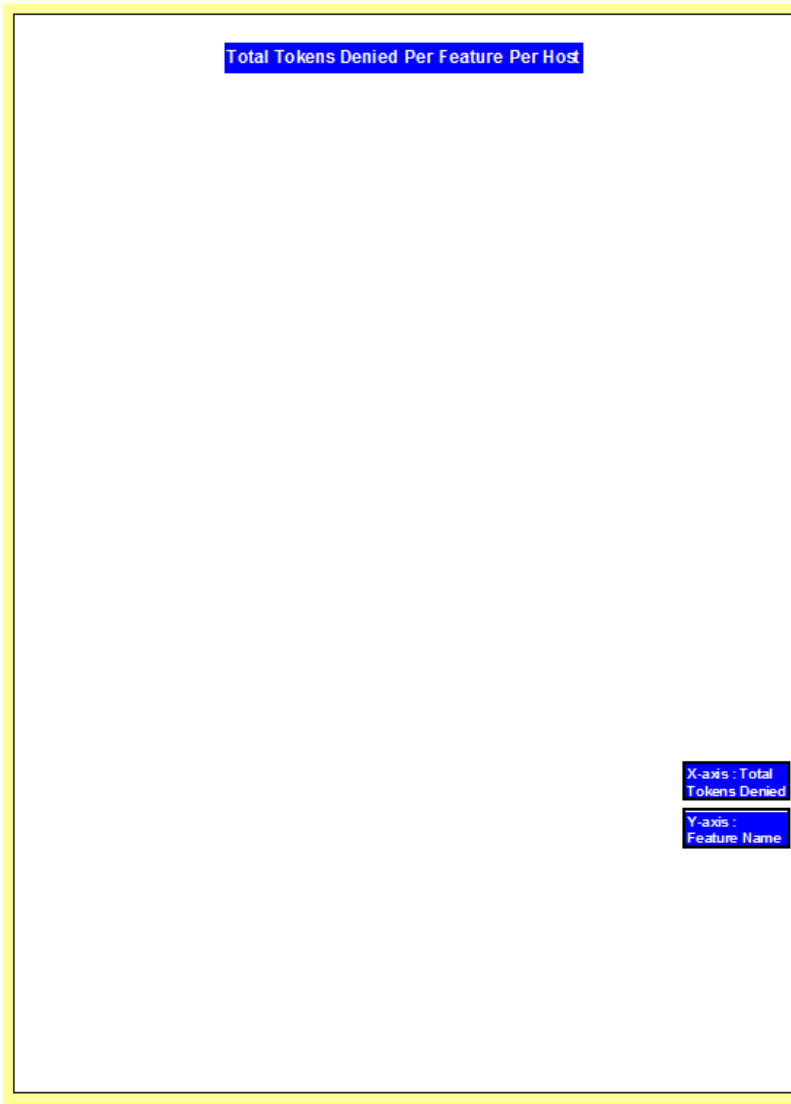
This lists the average tokens assigned to a host in hours during the specified date range

4.2.11 Total Tokens Denied Per Feature Per Host

This is available when the following button is selected on the form:



When selected, the following report is displayed:



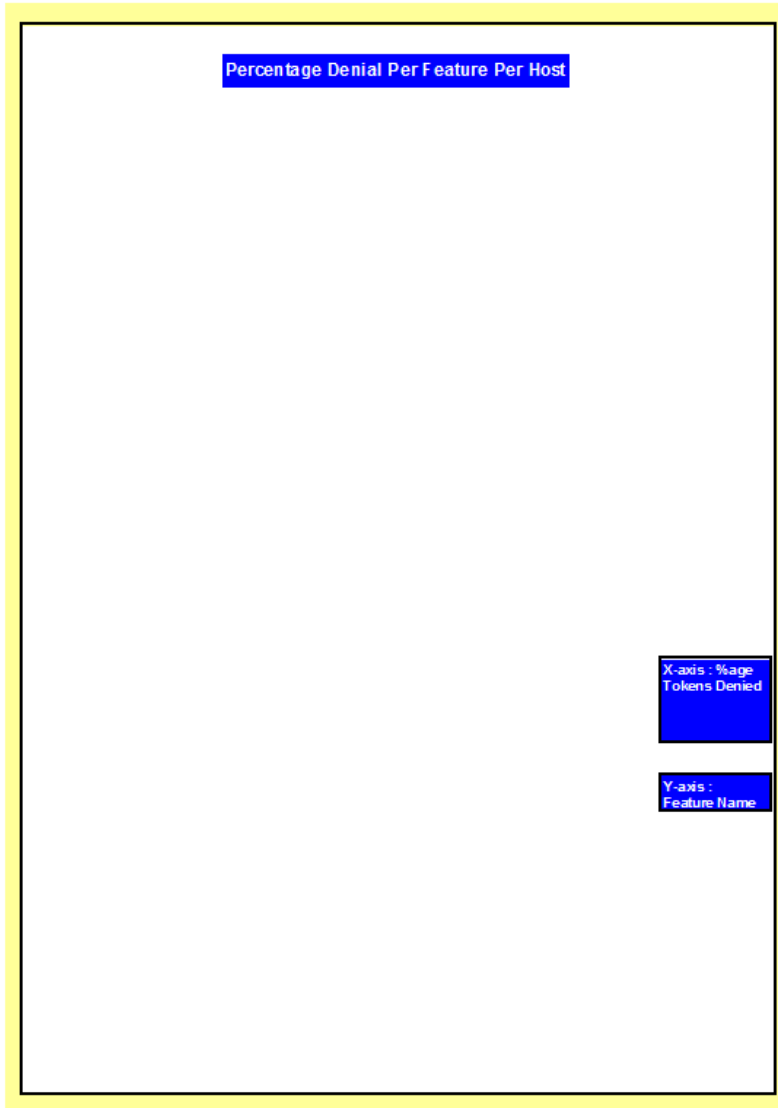
Lists total licence features denied for hosts.

4.2.12 %age Tokens Denied Per Feature Per Host

This is available when the following button is selected on the form:

%age Tokens Denied Per Feature Per Host

When selected, the following report is displayed:

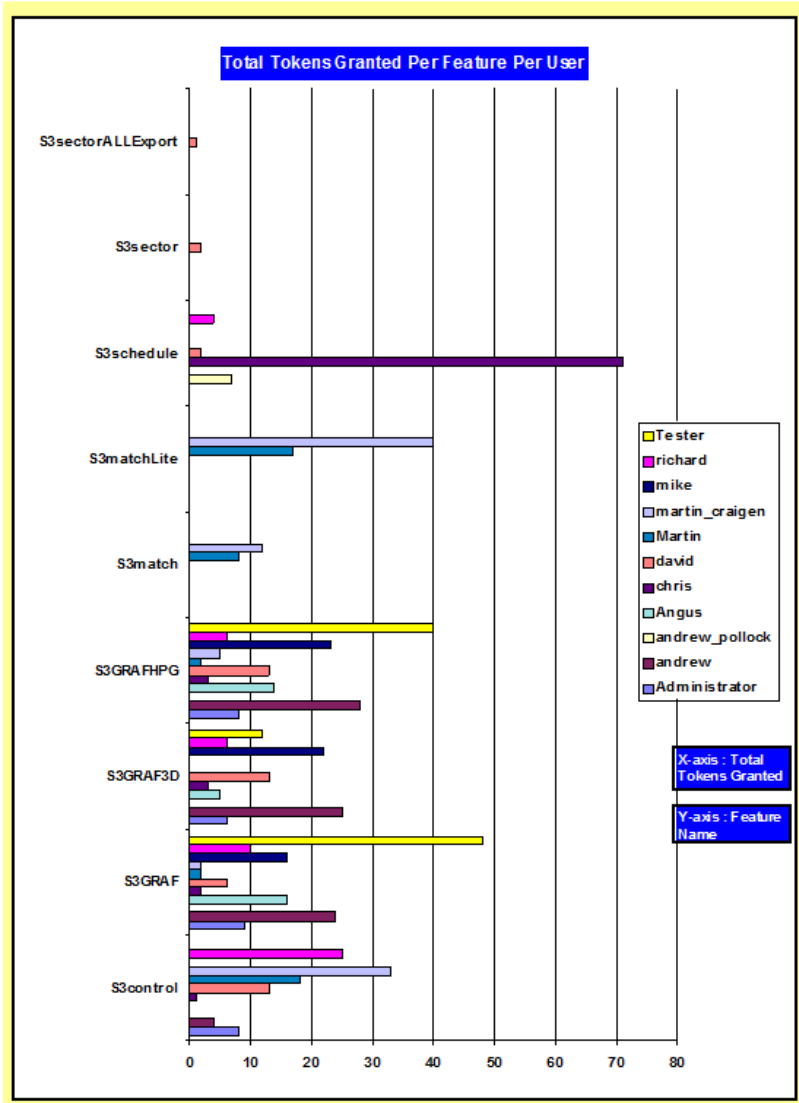


4.2.13 Total Tokens Granted Per Feature Per User

This is available when the following button is selected on the form:

Total Tokens Granted Per Feature Per User

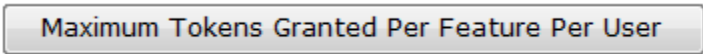
When selected, the following report is displayed:



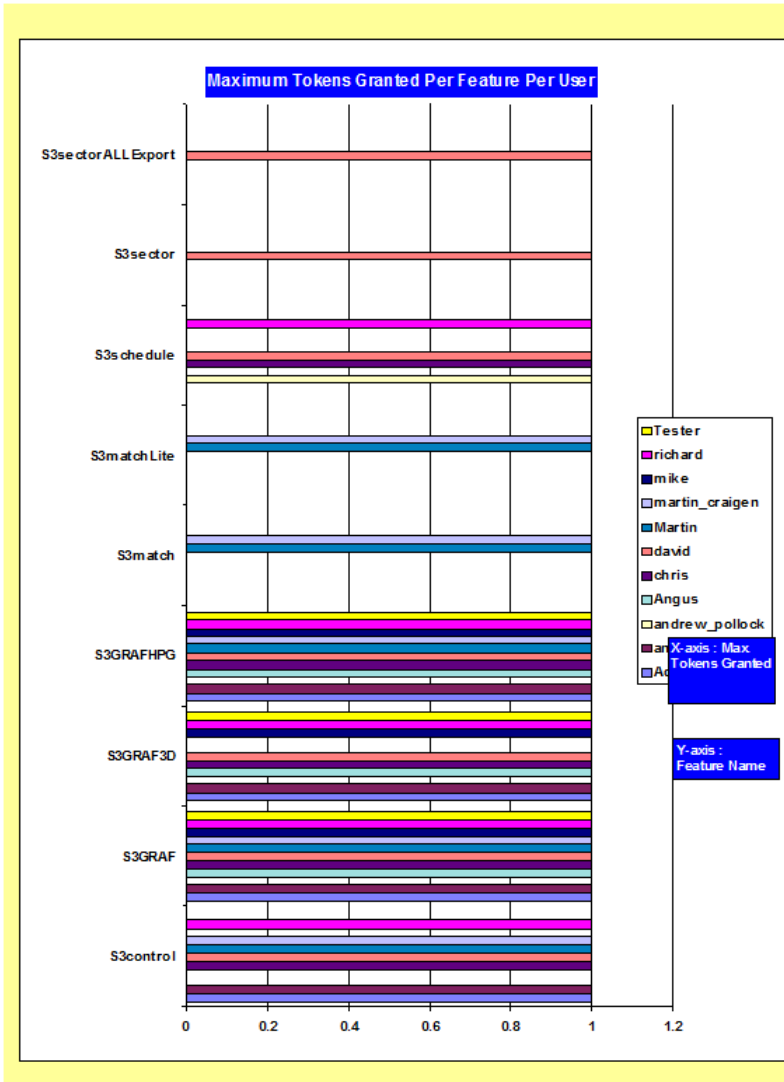
This lists the total licence features assigned per user during the specified date range

4.2.14 Maximum Tokens Granted Per Feature Per User

This is available when the following button is selected on the form:



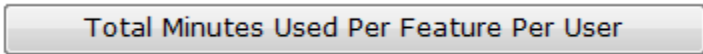
When selected, the following report is displayed:



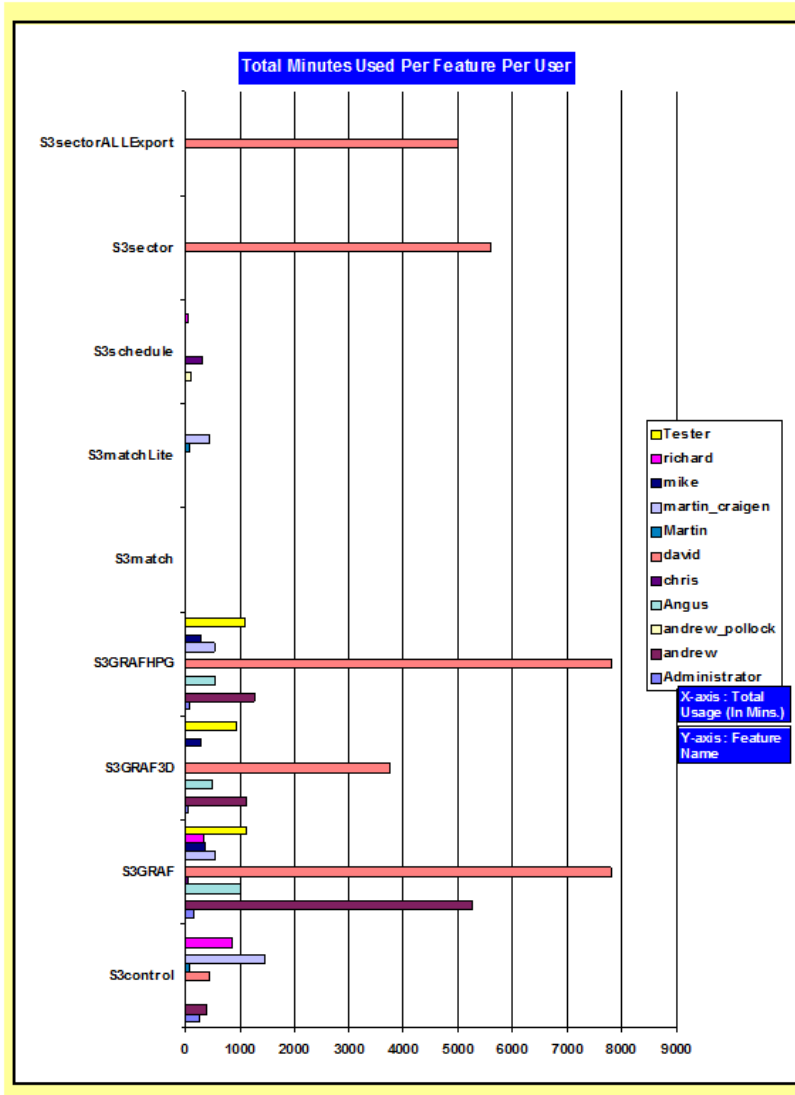
This lists the maximum licences issued per user during the specified date range

4.2.15 Total Minutes Used Per Feature Per User

This is available when the following button is selected on the form:



When selected, the following report is displayed:



This lists the total minutes a feature is used by users during the specified Date Range.

4.2.16 Average Tokens Granted Per Feature Per User

This is available when the following button is selected on the form:



When selected, the following report is displayed:

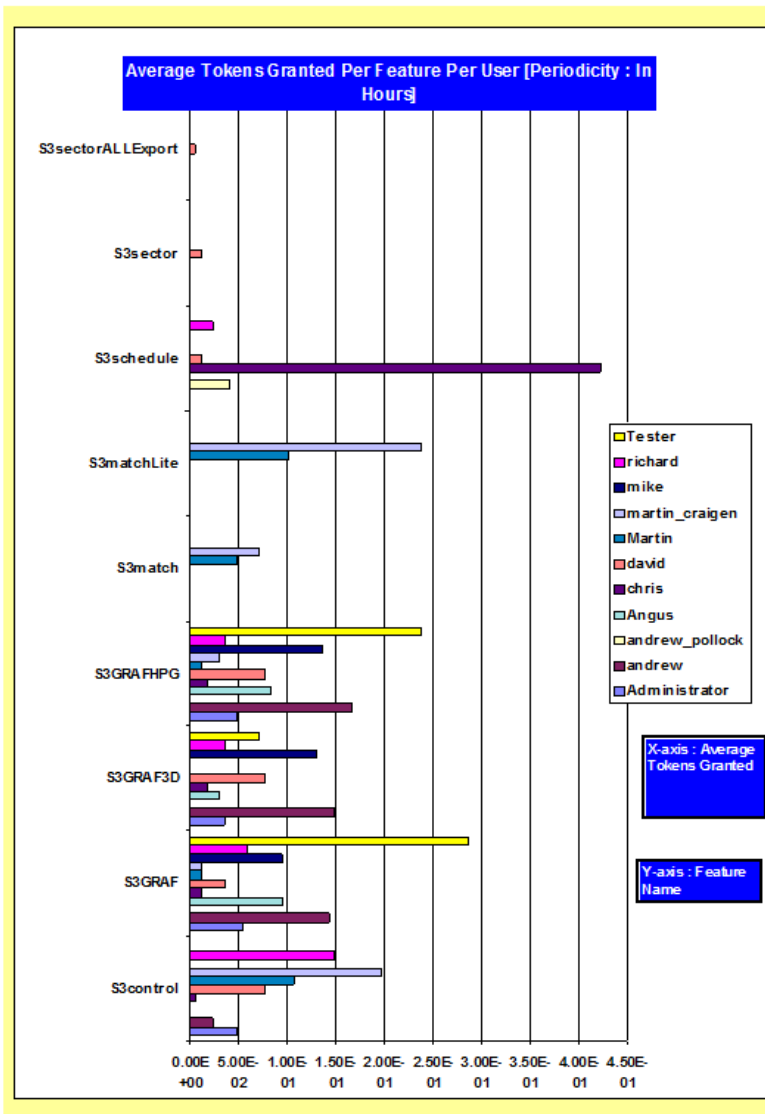
Average No. Of Tokens Granted Per Feature Per User

Enter Periodicity :

View Report, When Periodicity Entered is in :

Report Algo : Average Tokens Granted Per Feature Per User <Periodicity>
 Per < Mins | Hours | Days | Weeks >

In this case, the periodicity should be selected. For example selecting Hours results in:

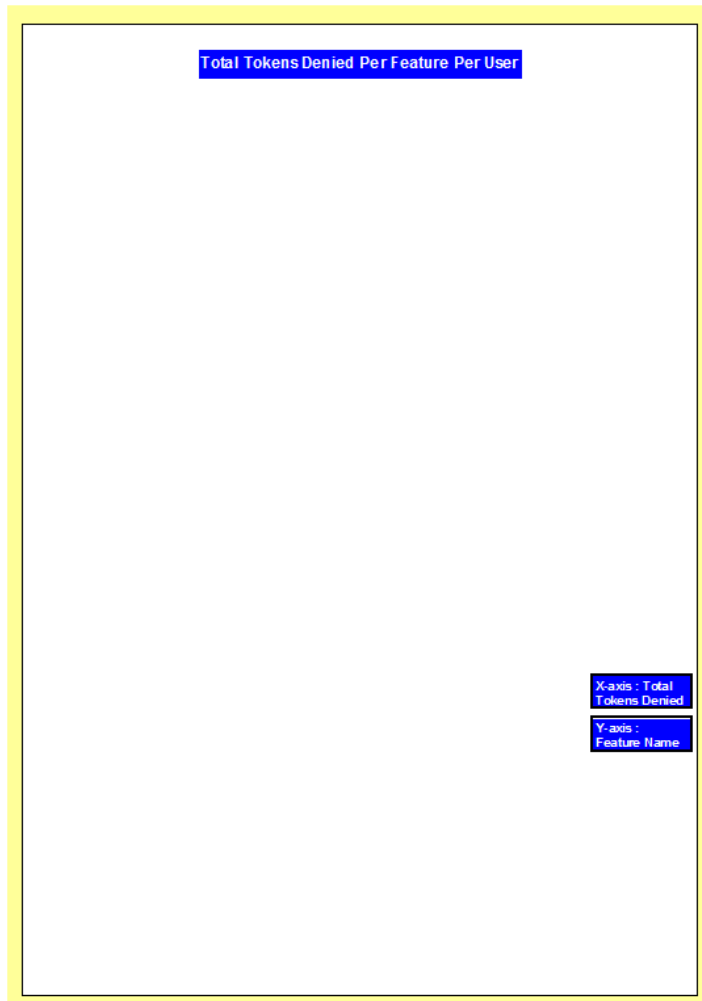


4.2.17 Total Tokens Denied Per Feature Per User

This is available when the following button is selected on the form:

Total Tokens Denied Per Feature Per User

When selected, the following report is displayed:



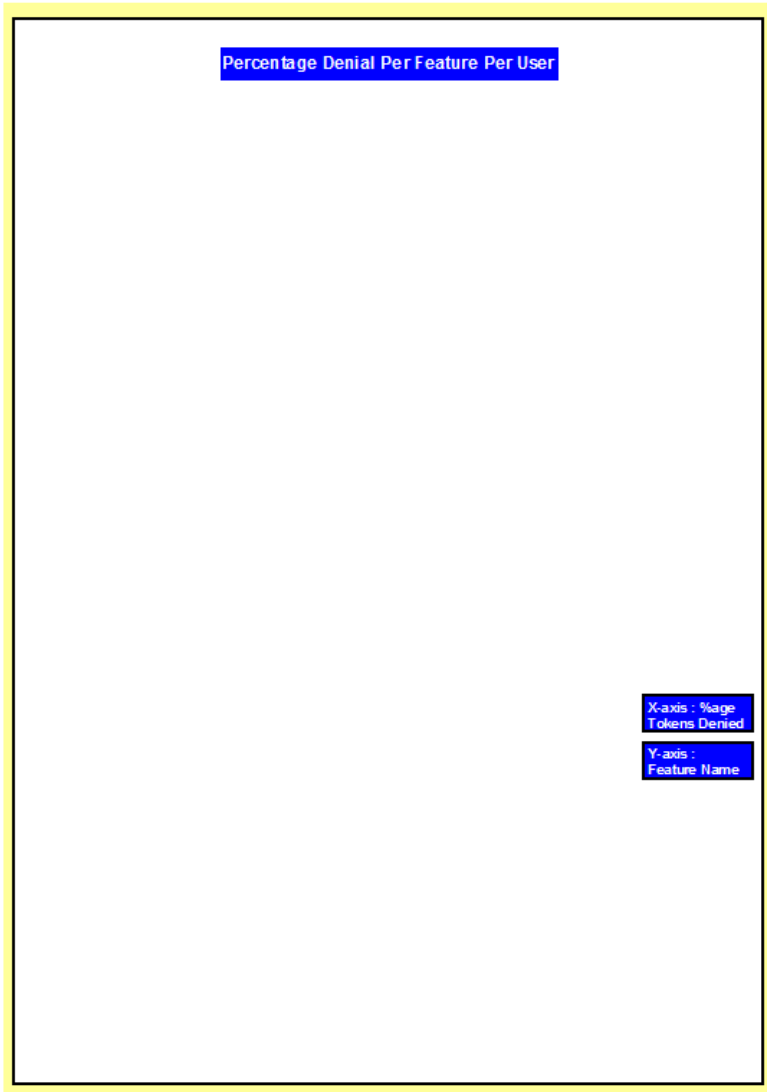
This lists the total number of licences denied per user during the specified date range

4.2.18 %age Tokens Denied Per Feature Per User

This is available when the following button is selected on the form:

%ageTokens Denied Per Feature Per User

When selected, the following report is displayed:

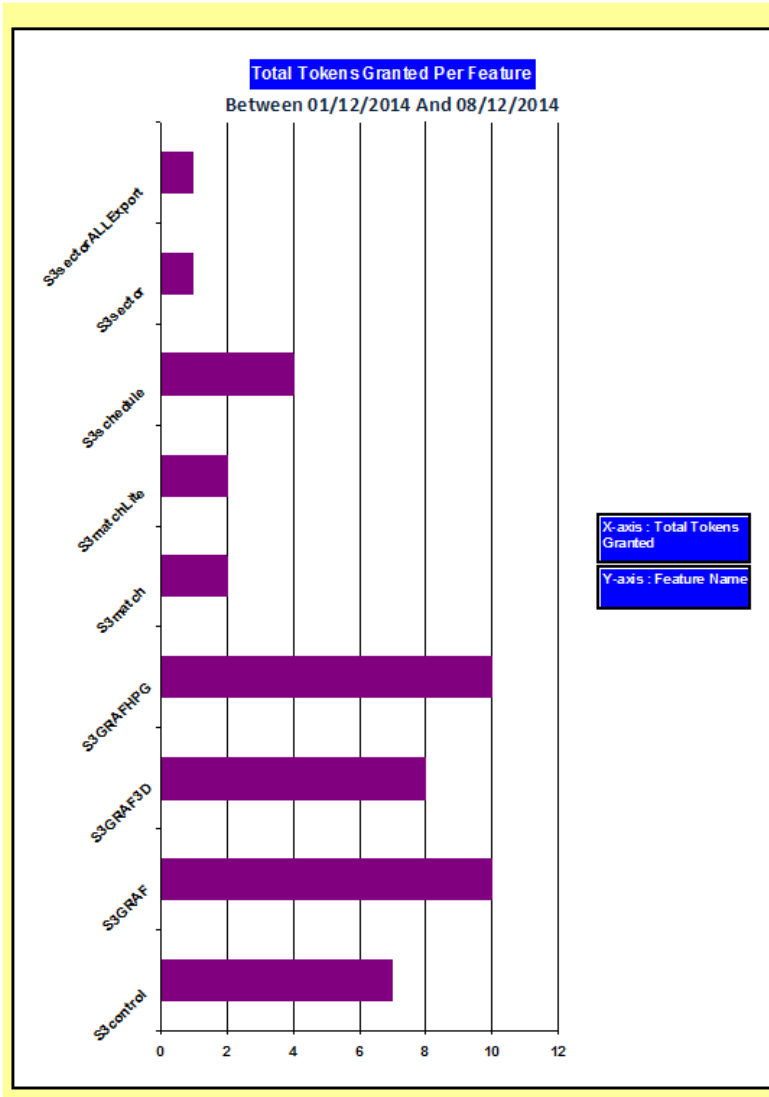


4.2.19 Total Tokens Granted Per Feature Per Period

This is available when the following button is selected on the form:

Total Tokens Granted Per Feature Per Period

When selected, the following report is displayed:



This lists the Total number of individual licence features issued during the specified date range